



**DORMINGTON & MORDIFORD GROUP PARISH  
COUNCIL**

**Parish Clerk:** Mrs Chris Bucknell  
12 Cliveden Grove, Hereford HR4 0NE  
Tel: 01432 267549  
Mobile: 07777 669 662



**E-mail:** clerk@dormingtonmordifordgroup-pc.gov.uk



## Parish Council Newsletter

Your Parish Councillors hope you have  
A Very Happy Easter



Please note we now have a Facebook page. "Follow" us on this and do please add your photos and comments. Also don't forget we have a webpage as well (*see links at end*).

*Dear fellow parishioners*

The dates of the Monthly Parish Council meetings are:

- 19<sup>th</sup> April 2017
- 17<sup>th</sup> May 2017
- 21<sup>st</sup> June 2017
- 19<sup>th</sup> July 2017
- 20<sup>th</sup> September 2017
- 18<sup>th</sup> October 2017
- 15<sup>th</sup> November 2017
- 17<sup>th</sup> January 2018
- 21<sup>st</sup> February 2018
- 21<sup>st</sup> March 2018

*All meetings take place at 7.30pm at Mordiford School unless otherwise stated*

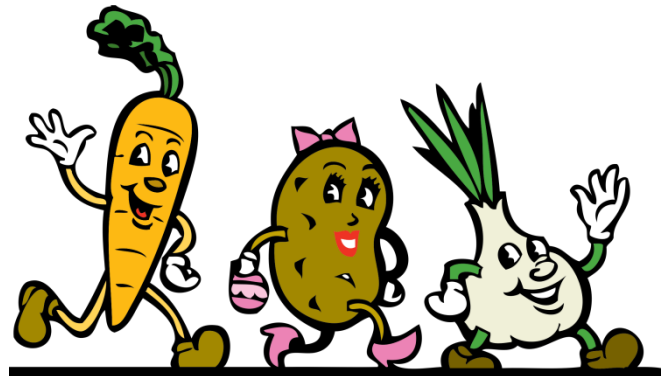
We would love to see you at these meetings - please do come along and help us make the decisions that are right for our parish.

### Annual Parish Meetings

The Annual Parish Meeting for  
**DORMINGTON**  
will be held on  
Wednesday 10<sup>th</sup> May 2017 at 7.00pm  
at Priors Frome Chapel

This will be followed by  
The Annual Parish Meeting  
for **MORDIFORD** also on  
Wednesday 10<sup>th</sup> May 2017 at 7.30pm  
at Priors Frome Chapel

### Allotments and Community Orchard.



The Parish plan (2007-2011) identified a demand for allotments. For this reason the Parish Council included a community orchard and allotments in the plan when the Affordable Houses were built at Shepherds Orchard: 13 allotments were made available and the PC has been trying to find tenants for them all. Eight were taken originally, leaving five vacant, but since then three people have had to drop out so **we now have eight available**. While they remain unoccupied they are costing the Parish Council (you!) £££s to maintain them and keep them tidy.

**PLEASE**, if you would like an allotment, or know anybody who might like one, contact the Clerk or Jan Ashton-Jones and they will give you all the information that you need.

*Contact details at the bottom of this newsletter.*

## Walking 4 Health

Every month, on a Tuesday, a small group of us goes for a walk, usually in our local area. We meet at 10 am and well behaved dogs are welcome!

We would love to have a few more people join us so if you are interested please contact **John Litchfield** or **Jan Ashton-Jones**.

## Footpaths

I'm sure that all you avid readers of our Parish Council newsletter will recall that I wrote in the last edition about the opening up of the footpath to the Backbury Hill Trig point. I am pleased to report that the work has been completed, the dense scrub of Blackthorn and Gorse has been cleared, and the footpath has



been way marked, so it is time for locals to revisit and relive those old memories, and those newly arrived in our community to explore an ancient site in the shadow of the Iron Age hill fort on Backbury.

A view of the top (195 m above sea level)  
*John Litchfield - Parish Paths Officer*



## Litter picking Saturday 8<sup>th</sup> April 2017

This is rubbish I picked up in the village recently and took home to dispose of. We are organising an official litter pick on April 8<sup>th</sup> so if you would like to join us please contact Mel Preedy.

## Black Poplar Identification day, Checkley .



Last autumn the Herefordshire tree wardens' network spent a very enjoyable afternoon along with Herefordshire Nature trust volunteers, interested parties and experts in the field, identifying the rare species of tree, the native black poplar (*Populus nigra* var. *betulifolia*) in Checkley.

(Image Wikipedia Commons)

Checkley is lucky enough to have a particularly high number of these very rare trees. There are approximately 8000 black poplars in the country, with Herefordshire holding a current total of 141 trees, 21 of these being in Checkley. More are being identified and a record of them is being kept by the Herefordshire Nature Trust.

The Black Poplar tree, which is the most endangered native timber tree in Britain, was grown for its use in timber framed buildings, carts and fireplaces due to its resistance to shock and low flammability properties. Indeed many houses in the area have fireplace surrounds and joists made of black poplar for this reason.

The black poplar can live for 200 years and dare I say it, aren't the most graceful of trees, having rather straggly branches, deep fissures and callous-like knobs on its bark with short leafy shoots. However they are a protected species and are under threat of extinction.

If you would like more information about these trees or have one on your property and would like advice to identify it, please contact either myself Jo Kippax or Doug Lloyd [d.loyd@herefordshirewt.co.uk](mailto:d.loyd@herefordshirewt.co.uk) (Herefordshire Nature Trust)

Facebook page <https://www.facebook.com/Dormington-and-Mordiford-Parish-Council-1275787725849321/>  
Web page <http://www.dormingtonmordifordgroup-pc.gov.uk/>

## Parish Councillors' contact details

Ray Dickson (Chairman)	01432 850 480	<a href="mailto:raymond.dickson47@gmail.com">raymond.dickson47@gmail.com</a>
David Lloyd (Vice-Chairman)	01432 870 515	<a href="mailto:linda_lloyd@btinternet.com">linda_lloyd@btinternet.com</a>
Jan Ashton-Jones	01432 860 736	<a href="mailto:janaj1009@gmail.com">janaj1009@gmail.com</a>
John Litchfield	07515 017 344	<a href="mailto:rectorybarn@yahoo.co.uk">rectorybarn@yahoo.co.uk</a>
Jo Kippax	07703 354 066	<a href="mailto:jokippax@btinternet.com">jokippax@btinternet.com</a>
Mel Preedy	07968 945 485	<a href="mailto:mel.p@caplor.co.uk">mel.p@caplor.co.uk</a>