



The Dragon



intentionally blank

Welcome to the April 2022 Parish Council (PC) newsletter

The aim of this newsletter is to share the work of the PC and to invite you to give us feedback on our activities or suggest improvements to the local area. You can do this by approaching any individual Councillor, messaging us on Facebook, or emailing/phoning our Clerk, Clare Preece.

Clare is doing a sterling job of getting to grips with our many projects, and studying for her CILCA exams – she also sings in a choir, and is a busy lady. We are very pleased to have her working with us.

We have **two vacancies for councillors in Mordiford Parish** – please contact Clare for information on what being a councillor means and for information on how to express an interest: clerk@dormingtonmordifordgroup-pc.gov.uk
We thought you might like a summary of just some of the enjoyable and essential projects we are involved with:

Checkley Common – working with the landowner and stakeholders on biodiversity enhancement and conservation.

Neighbourhood Development Plan – we will be seeking your views and you will soon see a Call for Sites being advertised. You are welcome to attend NDP Steering Group meetings, advertised on the PC website and on Facebook.

Jubilee Queens Green Canopy – providing rare but local trees and a commemorative slate plaque for each of the local community hubs.

Queens Jubilee – working with the school to mark the occasion, and hopefully having a **Beacon at Swardon Quarry**.

Maltings Green, Dormington, adopting it from Hereford Council, helping residents to refresh the green and the children's play area

Checkley and Dormington: Easter Egg hunt and races

Lengths Man Scheme and Drainage Grant keeping our minor roads safe

The upkeep of our beautiful Public Rights of Way, and the launch of a new and exciting **Mordiford Dragon Trail!**

B4224 Safer Road Working Group

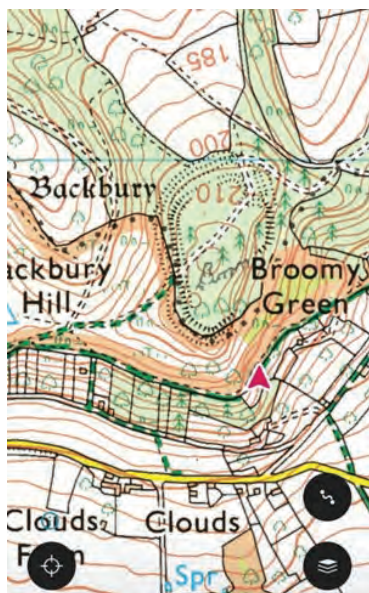
Keep updated with news, local events and comments on our FB page and our website <https://dormingtonmordifordgroup-pc.gov.uk/> or QR codes above

Focus on footpaths

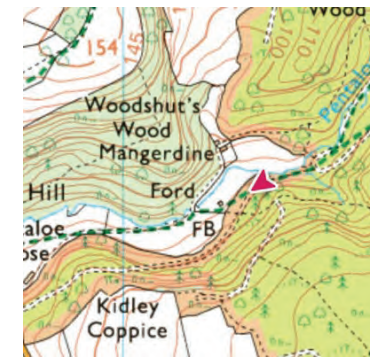
The new season of work has begun on our footpaths and Public Rights of Way (PROW). We had a lot of fallen trees during the recent storms which blocked and sometimes damaged the paths. We have contacted landowners so that they can undertake the work – and in some instances we have done the work ourselves.

As you know, most of your parish councillors work full-time and must fit the unpaid PC work around their day jobs. So it's helpful when you report fallen trees and other footpath problems to us.

Here's a selection of images



showing some of the damage our Footpath Officer has dealt with. This is a rotten post on MF 12. Fencing



material prices have doubled, and increases continue.

Above—on FB 4 by Mangerdine, belonging to Forestry England. By the time this has gone to press, hopefully this will have been removed.



Right- Before and after shots of the bridle path on MF6, which is now safe for horse riders to use again.

So you can see why its important to have a good relationship with landowners who are legally responsible for keeping PROW clear (or giving us permission to do so on their behalf).



John Champion West Mercia PCC

Working for and with the local community to build a safer West Mercia.



As your PCC I work for and with the local community to build a safer West Mercia. It is my role to govern and scrutinise the service you as a member of the local community get from your police force.

As your commissioner my priorities are:

- Putting victims and survivors first
- Building a more secure West Mercia
- Reforming West Mercia
- Reassuring West Mercia

To find out more about the work I do as your PCC, please visit the details below.

01905 331 656

opcc@westmercia.police.uk

www.westmercia-pcc.gov.uk



@WestMerciaPCC

REPORTING PROBLEMS TO HEREFORDSHIRE COUNCIL

We occasionally receive reports of fly tipping, potholes, fallen trees, dog poo, abandoned vehicles or other problems.

To report a problem if you have a smart phone, open the camera app, and hold the camera in front of the square images below.

Smart Phones recognise QR Codes, so you should get a screen message with a web page on it; tap it and the relevant web page should open where you can complete the on-line reporting form.

This QR code is for reporting road-related problems - try it and see what happens:



If not, here are the web links, and phone numbers to report it directly:

Report an urgent Road Problem (24/7): 01432 261800

ethelpline@herefordshire-gov.uk

Focus on environmental matters



NEW YEAR, NEW YOU,
NEW GREENER FOOTPRINT

22 WAYS TO SHOW YOU CARE FOR THE ENVIRONMENT
AND NATURE ACROSS HEREFORDSHIRE IN 2022

The news during the second week of March 2022 is of record-breaking temperature increases at both Poles of 30°C and 40°C, unimaginable for the animals that live there, and causing sea ice to melt rapidly. We are preparing for more extreme weather events, and trying to reduce our impact on carbon levels and carbon particulates. The use of fossil fuels and their associated carbon emissions help to heat up the world, whilst particulates help to speed up melting of the ice caps and glaciers.

Parish Councils have been asked to set up **emergency plans** for extreme weather events such as flooding, heavy snow, heat waves etc which may include establishing a series of local Community Hubs, with food, heat, light, toilets, and a place for people to sleep. There will be more information on this over the coming months

For information on how to **reduce one's carbon footprint**, assistance on insulation and **reducing the costs of heating and lighting**, please go to:



<https://zerocarbon.herefordshire.gov.uk/media/1203/new-year-new-you-new-greener-footprint-guide.pdf>

For **Gardeners**, already green fingered, there's more information here on how to sequester carbon and reduce it as well!

You could also make a pledge as part of the **Greener Footprints Campaign**.



**CARBON WORKOUT GUIDE:
HOW TO TURN GREEN FINGERS
INTO GREEN ACTION**

A SIX-POINT CARBON WORKOUT PLAN FOR GARDENERS TO SUPPORT
THE COUNTY'S NET ZERO PLANS



Join us for the Jubilee Beacon at Swardon Quarry

We are supporting and helping to run the Queens Jubilee Beacon being held on **Thursday 2nd June, at Swardon Quarry**. This is roughly in the centre of the map, with a small red arrow showing its location. Google Maps reference: <https://goo.gl/maps/cVzZ4Kdb0Jiw6tue8>

cVzZ4Kdb0Jiw6tue8

There is only very limited parking at the Quarry so we would ask you to walk up to the site if possible. Unfortunately the site is not fully accessible.

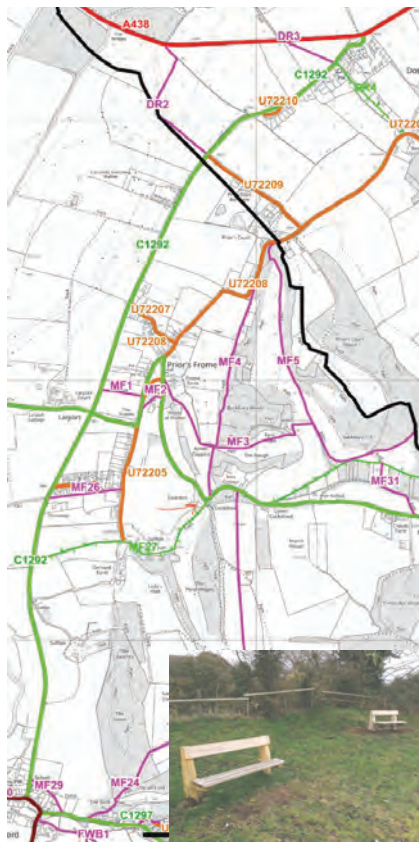
At the last Jubilee, those of you who attended will remember it had rained heavily and it took Cutter quite a while to get the beacon lit. We are also co-ordinating with Holy Rood Church, Mordiford and a mini-Sufton Fete will temporarily relocate to the field next to the Beacon. The event will open at 5.30 pm, with all proceeds going to the Church.

Beacon lighting 9.45 pm—

simultaneously with other UK beacons. We are hoping there will be a Burger Van, but also that you will bring your own picnic and perhaps make a **Jubilee Beacon Pie**.

There will be electric car rides available, thanks to Wye Drive (donations of a £2 or more to the church), and raffles at £2 ticket with fabulous prizes (food, nights out for couples, and a 2 hour EV driving experience)

There are two benches—so bring a blanket to sit on and wrap up warm!



The Queen's Platinum Jubilee Beacon Tart

Ingredients representing all 4 nations of the UK
England: Cheddar Cheese
Scotland: Smoked Salmon
Northern Ireland: Potatoes
Wales: Leek
Average cost of ingredients per tart, between £3.75 & £5.00
The following quantities will serve TEN people.

Pastry

140 g (5 oz) plain flour
 35 g (1 1/4 oz) margarine
 35 g (1 1/4 oz) vegetable fat
 About 1 1/2 tablespoons cold water
Or use ready-made shortcrust pastry
 * 20 cm (8") loose-bottom flan tin
 * baking beans

Filling

100 g (4 oz) Smoked salmon (trimmings or chopped small)
 50 g (2 oz) leek
 100g (4 oz) cooked potatoes
 70g (2 1/2 oz) Cheddar cheese (grated)
 200 ml (7 fl oz) single cream
 2 large eggs (beaten)
 1 tablespoon fresh chopped parsley
 Black pepper
 Butter or oil

1. To make pastry - place flour in bowl add the fats and rub in lightly with fingertips until mixture resembles fine breadcrumbs. Add enough cold water to bind to a soft dough, knead briefly and shape in to a ball. Wrap and chill for 30 minutes.
 2. Roll out the pastry and use to line the flan tin. Prick the bottom of the pastry with a fork. Line pastry shell with foil and fill with baking beans. Place tin on a heated baking tray and bake in preheated oven at 200°C Fan (Gas 7) for 10 minutes, remove foil and baking beans, return to the oven for a further 10 minutes.
 3. Reduce oven temperature to 160°C Fan (Gas 4)
 4. Scrub potatoes and place in a pan of lightly salted boiling water to cook for 15 minutes. Drain and allow to cool before removing the skin and then slicing thinly.



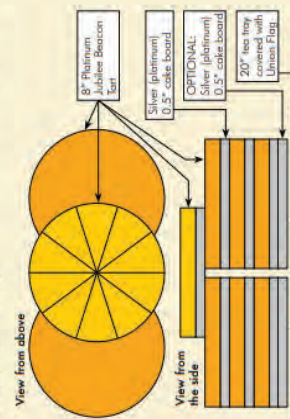
5. Finely chop leek. Heat a little butter or oil in a small frying pan, add chopped leek to the pan and cook over a low to moderate heat, stirring occasionally, for about 10 minutes until soft but not coloured - allow to cool.
 6. Mix together cream, beaten eggs, chopped parsley and plenty of ground black pepper. Layer filling in pastry case; spread smoked salmon over base of tart followed by cooked leek and then 50 g (2 oz) grated cheese (keeping remaining 20g (1/2 oz) to sprinkle on top). Top with thinly sliced cooked potatoes. Sprinkle remaining grated cheese over the top then gently pour cream and egg mixture in to the tart.
 7. Bake in oven for 30 - 35 minutes until filling is set and golden. Serve cold.

NB These quantities also make 18 small tarts using 8cm (3 1/4") plain round cutter and lining pastry tins. When making small tarts there is no need to blind bake the cases first. Bake small tarts at 160°C Fan (Gas 4) for about 30 minutes until filling is set and golden.

Guide to serving

A construction of seven Platinum Jubilee Beacon Tarts as shown below will serve 70 guests.
 Each tart represents a Decade of Her Majesty's reign.
 Each slice represents a Year of Her Majesty's reign.
 You will need: 7 x 8" freshly made Platinum Jubilee Beacon Tarts as per recipe
 7 x 8" x 0.5" silver (platinum) cake boards

1 x 20" tea tray
 2 or 3 x Union Flag napkins
 Optional: 2 additional silver (platinum) cake boards if greater elevation is required
 Additional napkins to hand to guests with their slice of tart
 Create two stacks of 3 x 8" tarts, each on a silver (platinum) cake board, and place side by side on a 20" rectangular tray covered with Union Flag napkins. Place a further tart centrally on top (7 tarts in total).



The above produces a 6" high stack of tarts. If further elevation is needed an additional cake board could be placed under each stack of 3 tarts.

Once the top tart has been ceremonially cut, remove it from the stack and set to one side to cut into ten slices. This will avoid 'crusting' the tarts underneath. Carry out the same process for each subsequent tart, remembering to remove each one from the stack before cutting into ten. The slices can then be handed round to guests from their individual boards accompanied by napkins if desired.



The Maltings

Those of you who keep up with our minutes, will know the Parish Council is in the process of trying to take over a green space in Dormington from Hereford Council, so that it can maintain it properly. The PC already maintains green spaces in Mordiford, and we are also working at Checkley Common with plans for pond restoration.



The green and the small play area in the Maltings got badly neglected over the years, and some of the shrubs and trees got badly overgrown, to the point where they were unsafe, and also prohibited safe parking.

Residents took the initiative and applied for a Community Green Spaces grant to make improvements for the tiny community who live there, and its already looking lovely with bulbs coming up everywhere.



For health and safety reasons, we have arranged for the flooring in the play area to be replaced—but currently the play area looks like this, but if all goes well the new flooring will be installed on 9th April.

TOLLEYHOME SERVICES

based in Priors Frome, Herefordshire



CHIMNEY
SWEEPING & MAINTENANCE



WOOD BURNERS
INSTALLATION & MAINTENANCE



WINDOW
FITTING & MAINTENANCE



PROPERTY
MAINTENANCE



Call Stu on 07867 675939
Email info@tolleyhomeservices.co.uk
Website tolleyhomeservices.co.uk

Checkley Common – a very special place

The Parish Council is working with the landowner, with expert guidance from ecologists, to conserve and enhance the Checkley Common and its biodiversity, and its specimen trees, under an initial ten year management plan. This will result in works such as limited tree felling and pollarding, which would aid pond restoration, and improve habitats for insects, reptiles and mammals etc.

Rotational cropping and cuttings collection, in addition to continuing the existing light grazing are essential for the health of the Common to conserve the ancient wildflower grassland.

Replanting specific areas with locally sourced grassland seed, and black poplar is being considered.

As works are planned, residents will be updated with information notices. Similar restoration and conservation is also being undertaken at Broadmoor Common, giving us further opportunities to learn about biodiversity and why common land is so important in the UK.



Cllr Mike Jones and one of the specimen Oak trees

Where will you go?
www.wyedrive.co.uk

WyeDrive
Electric

APRIL 2022

NEIGHBOURHOOD DEVELOPMENT PLAN—NDP

You may remember that we re-launched the NDP in December last year, and appointed a Planning Consultant, applied for grants to fund the process?

The first part of this is that The Steering Group has the go ahead from the Parish Council to begin the **Call for Sites**, and to send out the **DRAFT Vision statement and questionnaire** to Parish Residents (scan the blue QR code to access). **You should also receive a copy of the questionnaire with this newsletter.** If not, please contact our Clerk for a copy.

Tel: 07940391150 clerk@dormingtonmordifordgroup-pc.gov.uk



Please could you complete it and return it to the Clerk? The questionnaire relates to the Parish and how you envisage it should be over the next few years and more

An NDP should mean that our Parish is able to influence where housing, and other development, should be built, as well as house sizes and types, design and materials, so we need your inputs on what you want. The purpose is NOT to prevent houses being built but to influence **where** and how they are built.

Read more about the process on Herefordshire Council's web site: www.herefordshire.gov.uk/planning-building-control/neighbourhood-planning



Swardon Quarry Viewpoint

5.30pm—till 10.30 pm

Limited parking—please walk/drop off



Beacon lighting at 9.45 pm

FABULOUS PRIZES raffle draw at 9.30 pm

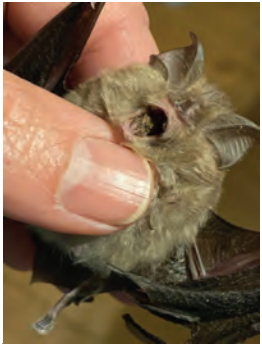
ELECTRIC VEHICLE EXPERIENCES WITH WYE DRIVE

Proceeds and donations to Holy Rood Church, Mordiford

Bring binoculars to spot other beacons, a torch, picnic, rug, Beacon Pie, clothing and footwear suitable for time of night and year

No unaccompanied children

Please take your litter home



No Mow May— Coming to a churchyard near you

As May approaches, keep your eyes open for increasing numbers of wildflowers and insects, as people's conservation efforts begin to impact on our local environment.



This includes St Peter's Church Dormington, which is having another no-mow May, with mown paths. These are some of the insects and plants we found here last May, all of which support some very rare mammals, including the Lesser Horseshoe Bat. Old churches and churchyards support a surprising amount of wildlife.



Introduction from your Safer Neighbourhood Team

Excessive or inappropriate speeding is dangerous and is responsible for many unnecessary injuries and collisions. It is a serious traffic offence which affects the quality of life of many communities throughout Warwickshire and West Mercia.

Reducing excessive and inappropriate speed is a priority for Warwickshire Police and West Mercia Police. Both forces use a wide range of education, enforcement and publicity programmes to address the issue. Our Community Speed Watch

(CSW) initiative is one of these. Similar schemes are operated throughout the UK.

These local schemes are established where communities raise speeding as a concern through their local safer neighbourhood team, parish council or at a local PACT (Partners and Communities Together) event or Community Forum. They enable local people to play an active role in improving their community and provide a valuable deterrent to people driving irresponsibly.



What is Community Speed Watch?

Community Speed Watch (CSW) schemes are coordinated by the police but managed and run by volunteers in the community.

The scheme enables local people to take an active role in road safety and make their community safer.

The aim of CSW is NOT to catch as many speeding drivers as possible. It aims to encourage motorists to drive at a safe and appropriate speed, reduce speed in areas of concern, re-educate drivers about the dangers of speeding and address concerns from local residents about cars speeding through their neighbourhood.

Now that Covid has "normalised" and the warmer weather is here, do let your Parish Councillors know if you are still interested in volunteering in your village (if it meets the "over-speeding" criteria). Unfortunately, for those of you who had already submitted application forms, these are only held by the Police for a short period of time due to data legislation, so if you still interested please could you let our clerk know? clerk@dormingtonmordifordgroup-pc.gov.uk

Projects in Hand.

- The appointment of a lengthsman has been agreed, funding obtained and the job advertised. A lengthsman deals with weeds on the road edges and the grass verges, clears litter, undergrowth, and the roadside drains and culverts; and maintains picnic sites.
- In response to a traffic census through Mordiford village, and following consultation with Hereford Council, the School Governors, and the parishioners measures are being considered which will calm the traffic past the school and improve the safety for our children attending the school: for example, a 20 mph speed limit and double yellow lines, a flashing 'Slow Down' sign. (These would be subject to funding availability).
- The possibility of improvements to the bus services are being researched in conjunction with Fownhope Parish.
- The Neighbourhood Watch Scheme is operating in 5 areas. Police bulletins are distributed.
- The police are invited to attend P.C. meetings and report to the meeting.
- A 'Housing Need' survey is being distributed with this Newsletter. Please spare a few minutes to help us address this important topic. Thank you.
- An exciting project to restore the 'Iron Room' has been initiated by the Parish Council under the guidance of Councillor Cheryl Shearer in response to a request from some enterprising youths of the Parish for a Youth Club. They have been active in clearing the site, and raising funds. The Parish Council has now applied for funding, and it is hoped that a Youth Club open to all 12 years+ in the Parish will soon be available.

Frances Dees Editor.

Advance Notice.

The Annual Mordiford Parish Meeting will be held on the 29th April 2009 at 8.00pm in Mordiford School Hall. There will be a guest speaker from the AONB; refreshments will be available. If parishioners have an item they would like to see on the agenda please inform the Clerk at least three weeks before the meeting.

Melanie Preedy, Clerk to the Council. Tel: 01432769480.

The Annual Dornington Parish Meeting will be held in St. Peters Church, Dornington on Tuesday 21 April at 7.30pm. Please contact the Chairman, Nick Brewin (01432 850456) for details and/or to request an agenda item.

DORMINGTON

AND

MORDIFORD GROUP PARISH COUNCIL.

Newsletter April 2009.

Dear Parishioner,

Welcome to the first edition of our Parish Newsletter. This is one of the ways **your Parish Council** is attempting to inform, report on and keep you in touch with matters that affect the Dornington and Mordiford Group Parish Council area.

We continue to address the 'living document' that is the Parish Plan; the embodiment of what is envisaged as the future for our parish. Current 'hot topics' include the traffic flow through Mordiford and especially, how we can minimise the risk of accidents to children around Mordiford School. To this end we have had meaningful discussions with the District Council, school governors and the police; we hope to see improvements to road safety soon. We have started the process for the engagement of a Lengthsman. This position will be undertaken by someone dedicated to enhancing the environment of our parish and make it a better place in which to live. This appointment will be made soon and you should see a difference over the coming months. Other ways in which we attempt to keep in touch are by notices on Parish Council notice boards, by our website www.dorningtonmordifordgroup-pc.org.uk and, of course, by your attendance at Parish Council meetings. I would like to close by paying tribute to the parish councillors and our clerk, who continue to work hard together on your behalf as an effective and dedicated team.

Kind regards,



Barry Durkin. Chairman

EXCERPT FROM 2009 - our first PC newsletter

Speeding in the villages

Speeding is become an increasing problem in our rural villages as you can see from the data below. If you would like to participate in a Community Speed Watch, there are details elsewhere in the newsletter. I hadn't appreciated how little journey time is saved—but how much fuel and air pollution is reduced by going more slowly.

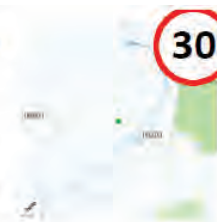


SpeedcamAnywhere

Summary report for B4224, HR1

Summary

On 1st April 2022, 3 out of 5 (60%) vehicles captured were captured speeding on B4224 HR1, with an average speed of 32.7 mph. The fastest was travelling at 36.3 mph.



How does breaking the speed limit by 6.3 mph affect your community?

Pedestrian deaths



Compared to 30 mph, a typical car travelling at 36.3 mph is 2.2 times as likely to kill a pedestrian on impact.

Stopping distance



Compared to 30 mph, a typical car travelling at 36.3 mph takes an extra 8.2 metres of road to come to a stop.

Air pollution



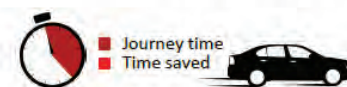
Compared to 30 mph, a typical car driving at speeds up to 36.3 mph releases 57.1% more nitrogen oxides (NOx) and 14.7% more CO2.

Traffic noise



Compared to 30 mph, traffic moving at 36.3 mph would generate an additional 1.7 dBA of road noise, on average.

How much faster would you get to your destination?



On busy urban roads with a 30 mph limit, a 3 mile trip could take around 25m 14s. Driving at 36.3 mph would only save about 27 seconds (1.8%).

Enforcing the speed limit makes your communities cleaner, quieter and safer!

Mordiford Parish Councillor Rob Cannings was recently interviewed by the **Property Drop**— www.thepropertydrop.co.uk/latest-drop—Here's the interview in full



I love where I live... Mordiford

Parish Councillor Rob Cannings tells Sharon Chilcott that Mordiford is a wonderfully peaceful place to live, now the village is no longer menaced by its legendary Wyvern!

I have a strong affinity to this area, having been born and bred in Hereford, alongside the Lugg Meadows. I've lived the majority of my life in Herefordshire, raised my four children in the county and returned to live in Mordiford 18 months ago, after a spell in the USA. I work globally as a Green Agriculture Entrepreneur, replacing chemicals with sustainable solutions and I am lucky to have the freedom to work from home.

What makes Mordiford a special place to live?

It's rural, but only four miles from Hereford and it has good road connections to Ross-on-Wye, Ledbury and Bromyard. This gives access to a range of shops, restaurants and sports facilities.

There is also a bus service into Hereford and a good rail service from both Hereford and Ledbury. This makes it an ideal place to maintain a good work/life balance without needing to drive everywhere.

Within the village is Mordiford Church of England Primary School, a very popular Academy School since 2013, which has an outstanding Ofsted classification.

For you, personally, what's the best thing about living there?

It's set in beautiful, fertile countryside, in an area where the rivers Wye, Lugg and Frome merge. There are great views over the flood plain and an ever-changing landscape and wildlife. Various parts of the parish are within a Conservation area, Site of Special Scientific Interest or the Wye Valley Area of Outstanding Natural Beauty.

What, if anything, spoils it for you?

There's a little too much traffic although measures to reduce traffic speed and the use of the bridge by overweight traffic are being worked on with Herefordshire Council. We lost

the village shop and Post Office a few years ago and that would be a great addition to the village.

Tell me about the history of the place...

The village grew up around an ancient ford over the River Lugg. The ford was replaced in 1352 by a stone bridge, the oldest surviving bridge in Herefordshire. On the edge of the village, overlooking the river, is historic Sulton Court, a small, Palladian Mansion, built in 1788 by James Wyatt. Mordiford is also associated with a unique, heart-shaped corn dolly pattern. But most fascinating of all, it is famed for the legend of the Mordiford Dragon. Villagers are about to open a walking trail through the village, with wooden sculptures,



There used to be a large portrait of the dragon on the wall of the village church, but it was removed in 1811 as it was considered a sign of the devil.

to help to bring this tale to life. The dragon or Wyvern is said to have been taken in as a pet by a young girl called Maude but, as it grew, it started to attack the local livestock and even the village folk. The details of what happened next vary, but one version is that the dragon was slain by a local who hid in a barrel and killed it when it came down to the river to drink.

There used to be a large portrait of the dragon on the wall of the village church, but it was removed in 1811 as it was considered a sign of the devil.

Describe the vibe in your favourite local café or pub...

The Moon at Mordiford is a laidback country pub, used by locals and walkers. It serves good food and you can take dogs into the bar area.

For a café, The Nest, near The Trumpet crossroads has great food and sells the best of local produce.

Where do you go for live entertainment?

Either The Courtyard in Hereford or Malvern Theatres.

Where would you book up for a celebratory meal?

There's a choice of restaurants in Hereford or Ledbury or nearer to home, The Greenman in Fownhope or The Crown at Woolhope.

Where would you go for a casual evening out?

Either the Moon or the Bunch of Carrots in Hampton Bishop, about one-and-a-half miles away.

What leisure pursuits do you enjoy locally?

Walking with the dogs, offroad cycling in the local woods and canoeing on the nearby River Wye.

Where would you shop for a dinner party?

Waitrose and the Secret Bottle Shop in Hereford. Wallers Butchers in Ledbury and The Nest, which I mentioned earlier.

Where would you shop for day-to-day groceries?

The closest village stores are two miles away in Fownhope. For the weekly shop I go to Tesco's in Hereford and out of hours there is a Tesco Express on the way into Hereford which has most of the basics.

What's the best time of year in Mordiford?

Summer, as the country views are wonderful, there are great sunsets across the flood plains and I can swim in the local rivers.

Tell me a fascinating fact about Mordiford...

Well, this is more about the area around Mordiford, but I am fascinated by the fact that the Lugg Meadow is an important survivor of the Lamas Meadows. Since before the Domesday Book, such meadows were opened for communal grazing on Lamas Day, August 1. The Lugg Meadow is rich in grass species, a habitat for the nationally scarce snake's head fritillary and narrow-leaved water dropwort and an important breeding ground for curlew and skylark. In winter, when the meadows flood, they become a huge lake, where you will see wild swans, grey geese and ducks. In spring, they attract migrant waders. Whilst, technically we are beyond the southern part of the true Lamas Meadows, in Mordiford, we still benefit from the wonderful wildlife.



Facts and Figures

Mordiford is a pretty Herefordshire village, with an estimated population of 600, set beside the River Lugg, about four miles east of Hereford. It is on the edge of the Woolhope Dome and the Wye Valley Area of Outstanding Natural Beauty, surrounded by beautiful scenery and lovely woodland and riverside walks. It has a traditional village pub and a well-regarded primary school. Its church, dating from the twelfth century and modified and restored after flooding in 1811 is the only one in Herefordshire to be dedicated to The Holy Rood.

Photos: Sharon Chilcott



Sharon Chilcott

Share the love

If you would like to share what makes your home town or village a special place to live, then Sharon would be delighted to hear from you. You can get in touch by emailing: core.concepts@btinternet.com, putting I Love Where I Live in the subject line.

A bit of Dormington History

Bridget Wood—a Dormington resident of many years reflects on things past

Dormington is an old settlement, the origins of the church are uncertain but the font is Norman and the door knocker is Romanesque. Over the centuries the population hovered around 100, farmers, labourers and associated craftsmen. Ledbury is 9 miles away, a day's journey with a horse and cart, and Hereford is 5 miles to the west.

When we arrived in the village 50 years ago there were 4 working farms, most villagers worked on these or had connections to these farms and many of the smaller houses owned by absentee landlords who very rarely visit.

In the late Twentieth century changes happened. A new estate was built on a derelict hop farm. The sudden arrival of 23 new houses and occupants doubled the population and parishioners worked hard to help to welcome and integrate these incomers, largely very successfully.



The area was formerly dominated by hop fields and hop picking and packing, and surrounded by cider apple trees. In September the field opposite the church was a lively, rowdy camp of pickers from the Welsh valleys. The church, normally open all the time was locked during hop-picking. And then the hop picking was followed by apple and potato picking. Machinery was introduced for both these tasks and performed quickly and efficiently but far less colourfully.

The tied cottages are now owner-occupied and extended and very few residents of Dormington work on the village. Very recently, Covid has forced, or enabled people to work from home - time will tell if this is a permanent change.

For a small rural settlement (still too small to call a village) Dormington has a good bus service, though it has just been reduced from hourly to two hourly which is a pity.

Spring Term at Mordiford C of E Primary School

This term we are excited that we have been able to invite parents back into school for celebration events and assemblies. At last, children have been able to benefit from a full range of enrichment activities: our Year 6 children have been challenging themselves on their 4 day residential trip in Wales, Year 4 & 5 performing at the Courtyard Theatre (Year 5 acting Romeo and Juliet, Year 4 sharing a dance they created themselves) with other classes taking advantage of the chance to enjoy school visits to Roman Caerleon, Warwick Castle, the Waterworks Museum and the Cathedral in Hereford. These activities promote the 'growth mindset' giving rich experiential learning and creating significant memories for the children. School life is at last beginning to feel more 'normal' again after covid restrictions.

Our Eco club have been busy planting bulbs, shrubs and trees and we are now enjoying seeing the early signs of Spring appearing in the school grounds. Outdoor learning is really important to us here : as well as exploring the environment, we have been using willow for basket weaving, making jewellery from wood, making bug hotels and bird feeders and our youngest children are experimenting with pipes to move water from one place to another, thankfully our parents are very understanding when uniforms get a bit muddy!

Thinking beyond the school grounds, our Key Stage 2 children will be leading our Easter Service worship in Holy Rood Church at next week. Our children have shown real compassion in their response to world news: they have recently initiated, planned and organised a fund-raising day for the people of Ukraine who are always in our prayers.

We look forward to celebrating the Queen's Jubilee in the summer term and are working with our PTA and local groups to see how we can make sure the event is celebrated in style.

It is safe to say that life at Mordiford C of E Primary School is full, fast-moving and fun!

Warm wishes for a sunny Spring and a very Happy Easter.

Sue Warmington



EVENTS

Further information will be published on local noticeboards and social media

Dormington – Every Tuesday 12.30 – St Peter's	Bread and Soup, hot drinks and chat
Checkley, St Nicholas Mission Church, date TBC	Queens Green Canopy Tree planting
Dormington St Peter's Church, date TBC	Queens Green Canopy Tree planting
Mordiford Holy Rood Church, date TBC	Queens Green Canopy Tree planting
Mordiford Green, 2nd May at noon	Opening of the Mordiford Dragon Trail
Mordiford School, 26th May at 7pm	Annual Parishes' meeting
Checkley, 3 rd June—time tbc	Jubilee community picnic
Swardon Quarry, 2nd June - fete at 5.30 pm	Jubilee Beacon 9.45 pm

Litter picks held in Dormington and Mordiford

Great to see communities coming together to remove unsightly litter. Dormington managed six well-filled sacks this year! If you see litter, please pick it up if its safe to do so—Be a Litter Hero! www.keepbritaintidy.org/get-involved/volunteer/litter-heroes



Please contact us—your councillors

Mel Preedy—Sufton	melpreedy@hotmail.co.uk
Derek Hughes—Sufton	derek@dormingtonmordifordgroup-pc.gov.uk
Marcus Billig—Sufton	marcusbillig@hotmail.com
Euan Grant—Dormington	euan@dormingtonmordifordgroup-pc.gov.uk
Rob Cannings—Mordiford	rob@dormingtonmordifordgroup-pc.gov.uk
Julia Cotton—Dormington	julia@dormingtonmordifordgroup-pc.gov.uk
Mike Jones—Checkley	checkleycouncillor@gmail.com
Clare Preece—Parish Clerk	clerk@dormingtonmordifordgroup-pc.gov.uk 07940391150

The man and the woman in the Moon

The Moon at Mordiford started life as a farmhouse over 400 years ago. It has been a Public House for many, many years, and in 2010 Alan and Karen took it on and have continued to make a success of it.

We would like to thank Alan and Karen for all of their help with the Dragon Project and for hosting the BBQ on our Grand Opening.

CHECKLEY CHURCH UPDATE

An update on where we are in planning the Re-development of St Nicolas Church Checkley. Following the open village meeting held on the 22nd September 2021 the small Development group have met four times and agreed a way forward. The Diocesan Grants Officer has assisted us to prepare the 'Architects Brief' and this was sent out and we hope to appoint the architect for this project once funds are available. The Quantity surveyor will be updating the cost so we can formally apply for grants after the Easter Holidays. It is anticipated we will again look at the possibility of providing some car parking facilities for the new development. An updated questionnaire has been prepared for the community and will be available at the 'Egg Rolling Event' on the 17th April. This will ask for specific possible uses for the redeveloped church as a community asset. If any one would like to have further details please contact Mike Jones or

www.mooninnmordiford.co.uk

WELCOME

TO THE MOON INN
MORDIFORD

We are Alan and Karen, the Landlord and landlady at The Moon Inn since 2010. We pride ourselves on quality food, quality beer, and above all a warm welcome. We have a large beer garden, Real Ales, Free wifi, a campsite, and two dogs, Bono and Oska. During your visit you'll be sure to see us; whether we're getting to know customers, serving behind the bar, or even serving your meals, so please don't be shy, we'd love to get to know you!

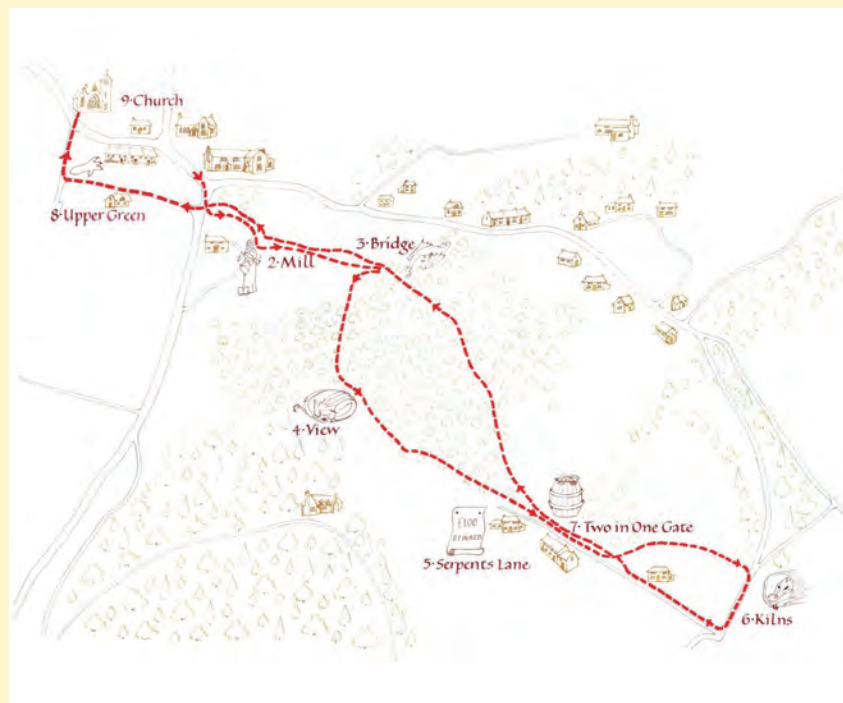
We hope you enjoy your stay in our cozy country pub.

Alan & Karen

THE MOON INN
MORDIFORD, HEREFORD
HR1 4LW
01432 873067
moonatmordiford@gmail.com

Grand Opening of Mordiford Dragon Trail

At last, the waiting is over and we can reveal the fabulous new addition to our walks, health and enjoyment, with the story of Maud, a Dragon, and a wicked person, who turned into a hero all of which takes place around beautiful Mordiford.



Join us on Mordiford Green, for the grand opening of the Mordiford Dragon Trail, Noon on May 2nd 2022

We have so many things to share and celebrate—meet the Wicked Dragon, meet Maud and her friends, all immortalised as statues by a local woodcarver.

Walk or park at the Moon and the School

With many thanks to the Lottery Heritage Fund, the Herefordshire Community Foundation, the AONB, and the Dormington and Mordiford Group Parish Council for their support in this three year project



The Story of the Dragon

One bright autumn morning in a field in Mordiford, a tiny green dragon egg hatched. With emerald scales, that glistened golden in the warm sunlight, it began to emerge. With deep golden eyes it blinked in the daylight. Tasting the air with its forked tongue it began to search for food. No bigger than a house cat, the fledging dragon hunted insects for food and curled its spiked tail around itself underneath a hedge for warmth at night. It was all alone.

A young girl named Maude, was out picking berries when she heard what sounded like a cat's meow. She stumbled across the dragon! Fearlessly, Maude scooped up the wide-eyed dragon, who gratefully cuddled into her arms. Maude gave it milk, and fish from the river Lugg, and they played hide and seek together.

As the dragon grew, so did Maude's love for her friend. During the days, it would play in the woods, and drink and splash in local rivers. As it got bigger, so did its appetite. Its claws and teeth had grown and it started to hunt local chickens and sheep. The villagers began to notice...

One day in the family dining room, the dragon hiccupped and to everyone's surprise let out a jet of fire! Maude was astonished. After the smoke cleared, a scorched table with glowing embers was all that remained. Maude's father ordered the dragon live outside. Maude set up a nest in the woods for her friend that was now as big as a large dog.

Without Maude's help to find it food, the dragon began to eat the villagers' cattle and sheep. The villagers were not happy and one night at a meeting they decided they wanted the dragon gone. Maude, cuddling her father, was in tears. . .

WHAT HAPPENED NEXT? - Walk the trail to find out!

PUBLIC NOTICE

SECTION 14(1) ROAD TRAFFIC REGULATION ACT 1984
HEREFORDSHIRE COUNCIL

U72207, CHAPEL LANE, DORMINGTON, HEREFORDSHIRE

TEMPORARY CLOSURE ORDER 2022

NOTICE is hereby given that Herefordshire Council intend, under the provisions of Section 14(1) Road Traffic Regulation Act 1984 (as amended), to temporarily prohibit the use by vehicles on the road mentioned below:

The U72207, Chapel Lane, Dormington, from the junction with the C1292 to Priors Frome Chapel. Grid Ref : 357523/239292

Please note—this work is planned for the 25th April, and should last one day., but could last longer

MORDIFORD DRAGON TRAIL

GRAND OPENING



Walk the trail and complete a family friendly challenge!

**Prizes for: Best Dressed Dragon, Best Model of a Dragon,
and complete the trail challenge (primary school only)**

Monday 2nd May from 12.00 at the Moon Inn Mordiford.

BBQ from 1:00pm with competition judging from 2:00pm

Park responsibly at the school or the Moon Inn, but ideally walk!

For more information please contact clerk@dormingtonmordifordgroup-pc.gov.uk

